

*forfront*

BEING A FORFRONTIER



### **IT'S ALL ABOUT YOU!**

Good people are at the centre of our success.  
We're small enough to take a personal interest in you  
but large enough to offer great career opportunities and benefits.

## **Contents**

Always on the lookout .....	<b>4</b>	Company Bonus.....	<b>25</b>
The Benefits.....	<b>8</b>	Transparency & Sharing .....	<b>27</b>
Forfront Office .....	<b>9</b>	Private Medical Insurance .....	<b>29</b>
Working in Epsom.....	<b>10</b>	Group Personal Pension Plan.....	<b>31</b>
Fuel Station - Office Food .....	<b>13</b>	Holiday Entitlement.....	<b>33</b>
Wimbledon Corner - Table Tennis.....	<b>15</b>	Referral Scheme.....	<b>35</b>
Stay Fresh .....	<b>17</b>	Bank Holidays .....	<b>37</b>
Commuting & Parking.....	<b>19</b>	Fish Tank.....	<b>39</b>
Look After Your Eyesight .....	<b>21</b>	The Test.....	<b>40</b>
Free Domain Name & Hosting .....	<b>23</b>		

# Always on the lookout

At Forfront we're always looking for motivated, dynamic, hard working individuals.

You'll join a creative team that is used to working hard in a competitive market. We expect the best, and reward you for achieving it.

The benefit of working in a small team is that you can really express yourself and excel. We always encourage you to enhance your skills and find your perfect position within the company.

---

## **The Company**

Forfront is an established and fast growing software house specialising in the design and development of digital marketing solutions, mobile apps as well as offering e-commerce and bespoke software for 20 years.

Don't be fooled by the start-up spirit when you visit the office.

---

## **Since 1998**

We have been around for a while and we are extremely proud of our organic, stable growth.

Our secret is the value we add to our clients' success and we need YOU to help us maintain and grow this success!

---

## **The Opportunities**

We are offering a fantastic opportunity for creative, original thinkers, motivated to push the limits and succeed in a friendly, dynamic and innovative environment where people share ideas and benefit from the success of the company as a whole.

Our spacious modern offices in Epsom, just south of London, offer an easy commute and the perfect surroundings for a friendly and creative atmosphere.

---

## **Equal Opportunities Employer**

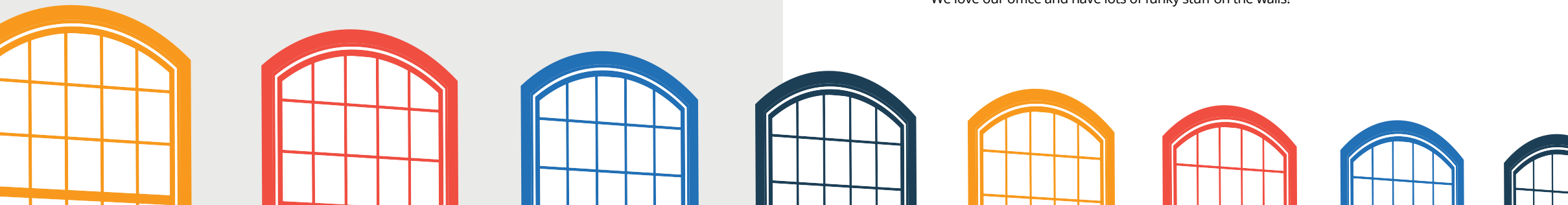
Forfront is an equal opportunity employer and does not discriminate based on race, colour, creed, religion, national origin, ancestry, nationality, alienage or citizenship status, age, sex, sexual orientation, gender identity or expression, marital status, disability, veteran status, or any other protected status under local law.

# The Benefits

## Forfront Office

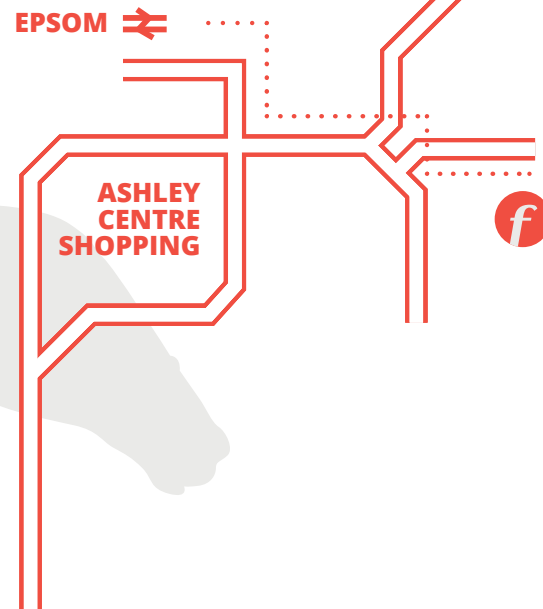
Located within easy commutable distance, we use Renaissance House, a purpose built office building next to the Deloitte offices in Epsom with the BEST ratio of windows per person in the country! Yes, we have more windows than people! We also benefit from the temperature controlled air condition system and central heating. The office is spacious with good lighting. Everyone has not one but TWO monitors with the latest technology PCs and a friendly IT team to support it.

We love our office and have lots of funky stuff on the walls!



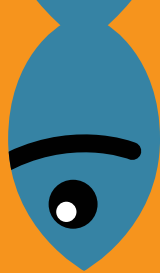
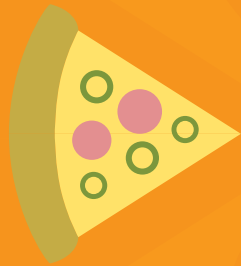
## Working in Epsom

Epsom is a market town in the borough of Epsom and Ewell in Surrey, England. Small parts of Epsom are in the Borough of Reigate and Banstead and Mole Valley District. The town is 13.6 miles (21.9 km) south-west of Charing Cross. The town straddles chalk downland (topped by the Epsom Downs part of the North Downs) and the upper Thanet Beds. The eponymous racecourse at its edge holds the famous DERBY at the start of summer which has become the name of a major annual competition across many sports in English-speaking countries. The town also gives its name to Epsom Salts which were identified in the mineral waters.



## “Best Place to Live” in the UK

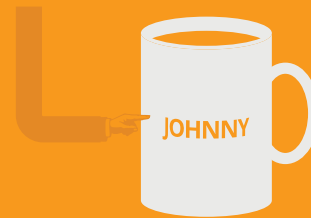
Owing partly to its position and transport infrastructure in the London commuter belt allowing easy access to the Greater London conurbation to the north and the rolling Surrey countryside to the south, the borough of Epsom and Ewell was named in August 2005 by Channel 4's Location, Location, Location as the “Best Place to Live” in the United Kingdom, and ranked at numbers 8 and 3 in subsequent years

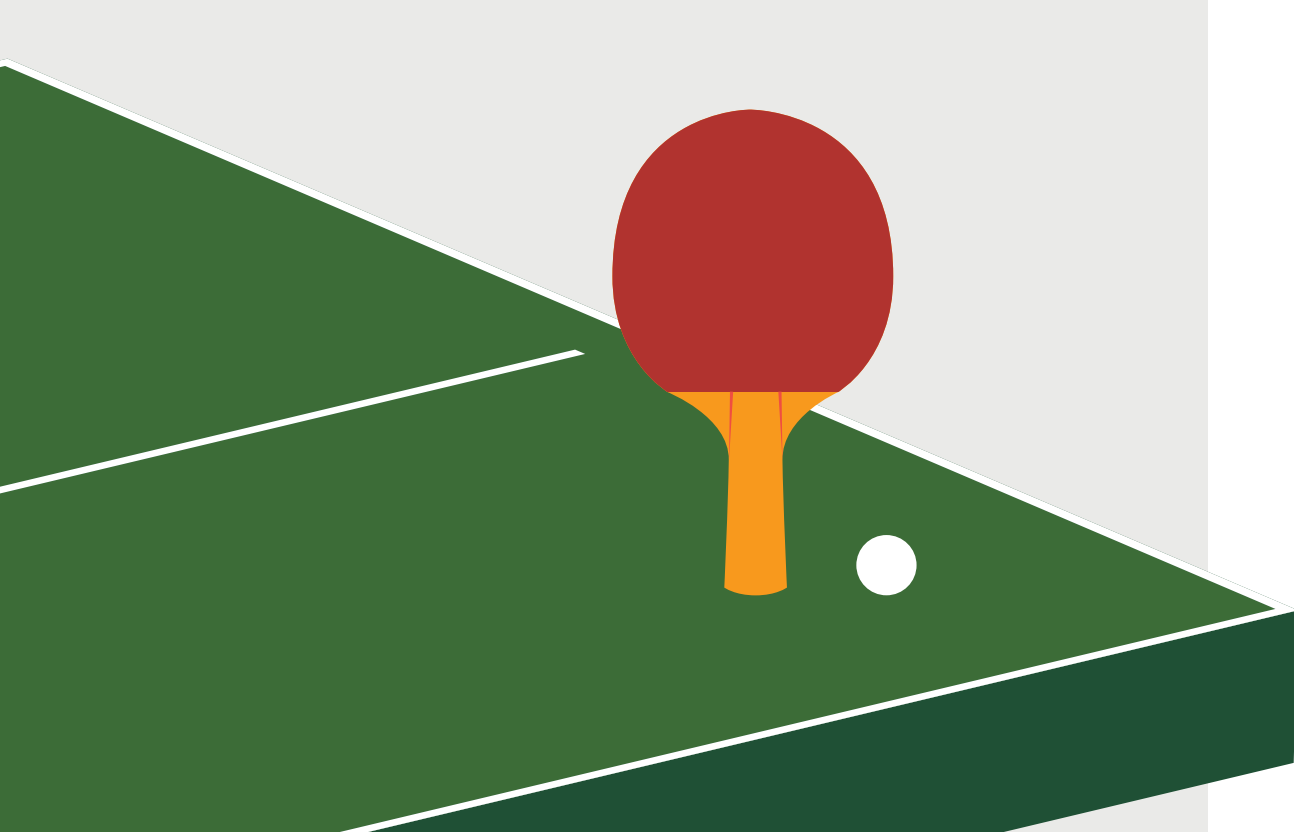


## Fuel Station - Office Food

We operate a policy of don't eat at your desk. It's un-hygienic and anti-social! So there is a kitchen and dining area equipped with a microwave and fridge big enough for you to keep your own food in it, you also have your own private space in the cupboard to store your food bits (be careful we may be judgemental). We provide complimentary coffee, tea and milk. We also have a Nespresso machine for the coffee snobs! (You provide your own capsules though).

**LOOK! WE'LL GIVE YOU A MUG WITH YOUR NAME ON IT**





## Wimbledon Corner - Table Tennis

The favourite part of the office for many is the Wimbledon corner where some very competitive table tennis matches are played during lunch time and after hours.





## Stay Fresh

If you exerted yourself in Ping Pong or if you jog or ride your bicycle to work feel free to freshen-up in the office shower-room.



## Commuting & Parking

**By Road:** From M25:

5 Miles (12 minutes) from junction 9.

From London:

16 Miles (35-60 minutes) via the A3.

**By Rail:**

0.4 Mile (7 minutes walking distance from Epsom station).

**Parking:**

We have a limited number of allocated parking spaces in our underground car park and there is a public car park just behind the office.



## Look After Your Eyesight

If you spend a lot of your day in front of a visual display unit (VDU), then we'll assist with the cost of an eye test and any corrective aids required for VDU work. You will get a free eye test and free glasses (full details on application).



## Free Domain Name & Hosting

If you would like to register a domain name and create a website for yourself then you can register and host for free on our servers.



## Company Bonus

Sharing success is at the centre of our philosophy. So if you are not in the sales team or do not have an individual performance commission and you have been with Forfront for over a year, you will also benefit from a percentage of our profits allocated to each employee. This is based on how long you have been with Forfront, recommendations from your managers and recommendations from your colleagues. Over-achieve and you share the success!



## Transparency & Sharing

We are proud to have great minds and we like to share our vision and ideas with everyone in the company. We are enthusiastic about our achievements and equally keen to involve all in our progress.



## Private Medical Insurance

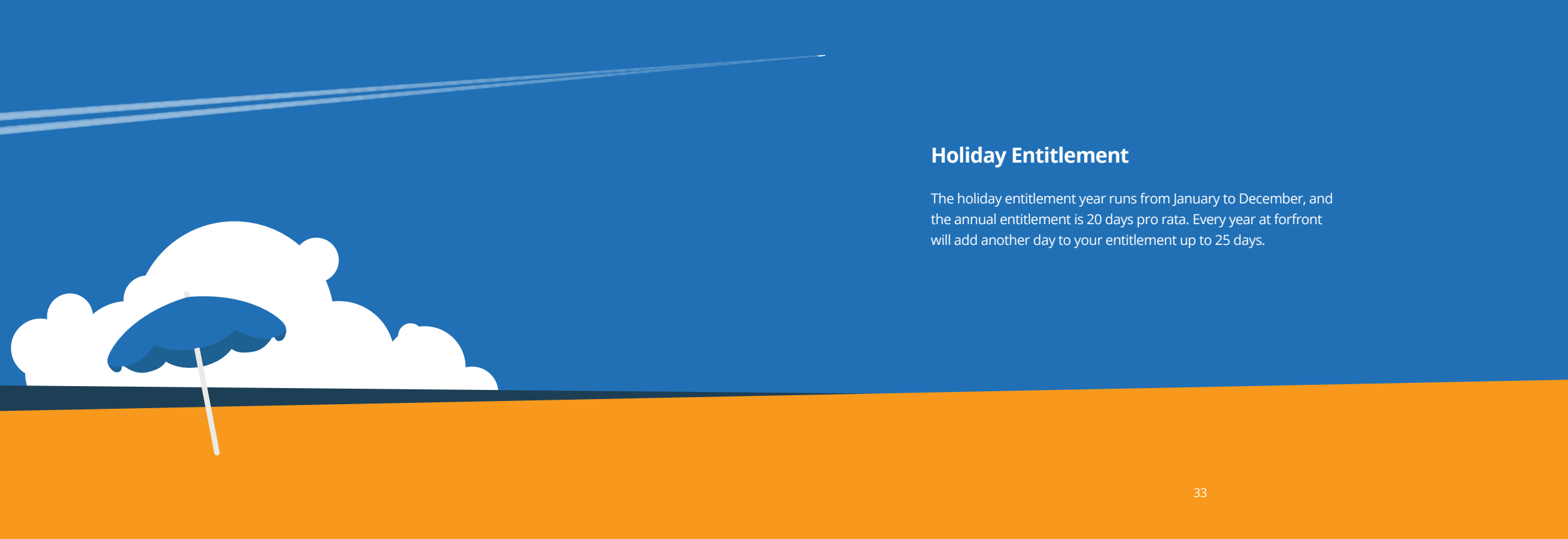
Private Medical Insurance is provided to you free of charge after completing one year of full time employment at Forfront. You can also benefit from discounted rates for your spouse, civil partner and/or dependent children where appropriate.



## Pension

Forfront is registered to the Automatic Enrolment Scheme and is contributing to employees' pensions.





## Holiday Entitlement

The holiday entitlement year runs from January to December, and the annual entitlement is 20 days pro rata. Every year at forefront will add another day to your entitlement up to 25 days.



## Referral Scheme

Win £100 for referring any new business to Forfront where the contract value is not discounted and is a minimum of £1000.

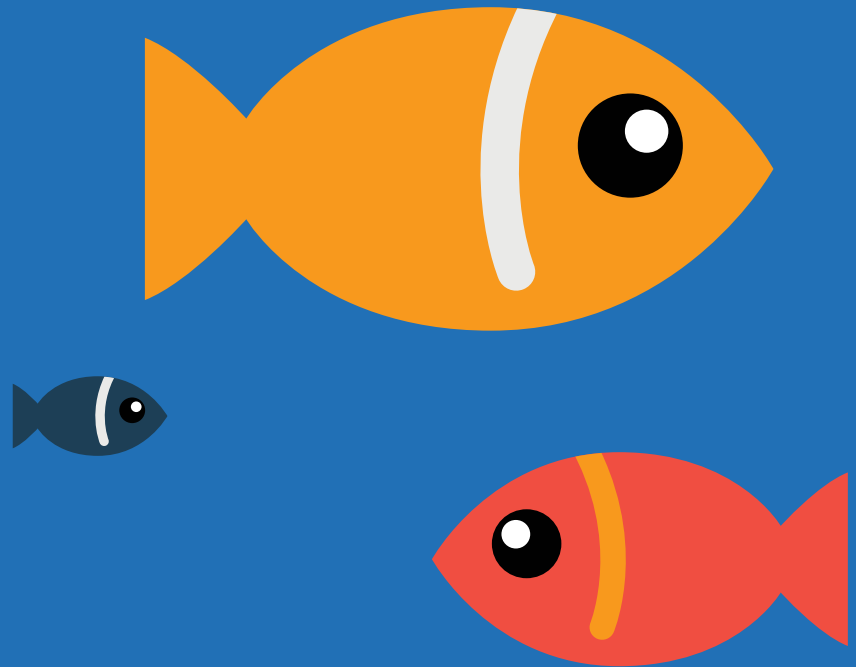
Referral payment will only be made after the contract has been paid.



## Bank Holidays

Just stay at home.





## Fish Tank

We have one!



## The Test

Are you: creative, an original thinker and exceptionally bright?

The box: think outside it; don't hide inside it.

Do you: love goldfish?  
know when *not* to be too good at table tennis?

**If you ticked all the boxes...  
what are you waiting for?  
You are a Forfrontier already.**